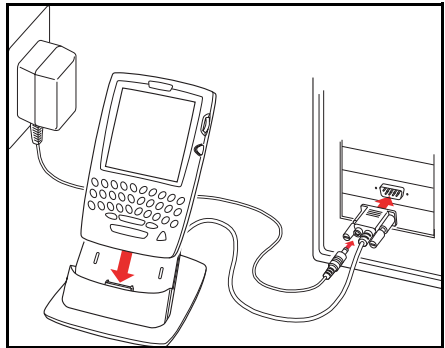
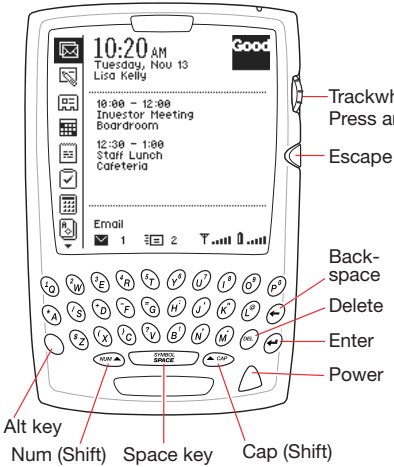
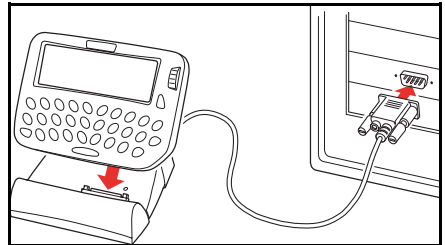
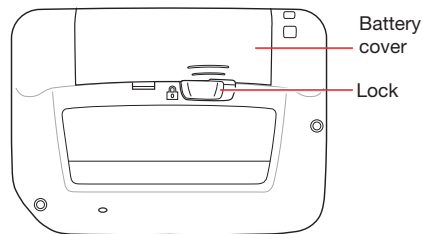
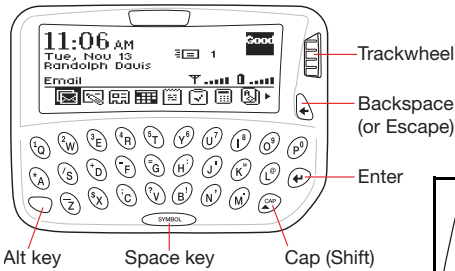


Quick Start Card

Setting Up the RIM 957



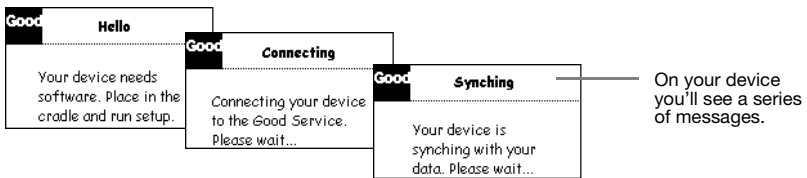
Setting Up the RIM 950



To install GoodLink Application software:

1. Verify that your Microsoft Exchange administrator has added your handheld device to the GoodLink Server. Also, make sure you have a GoodLink service account.
2. Connect your device, cradle, and cabling as shown.
Note: If you're using a RIM 950, unlock the battery cover on the back of the device and insert a new battery. Then click (press and release) the trackwheel to turn on the device.
3. Insert the GoodLink Application software CD into your computer's CD drive. Run the startup.exe program.

Follow the onscreen instructions. The setup.exe program installs desktop software on your computer, copies GoodLink Application software to your device, and generates an encryption key. Then it synchronizes information in your Outlook account with your device.





4. Remove your device from the cradle.

You should see the following information on your device:

- All personal contacts. (Global contacts are not included.)
- Calendar appointments from two months ago and all future appointments.
- All uncompleted tasks. (Reoccurring tasks are not supported. Only the first instance of a reoccurring task appears.)
- All notes. (including up to 4K of text per note.)
- Email folders and all email messages you send and receive **after** set up.

Sending an Email Message

Try out your device by sending an email message:

1. Scroll the trackwheel to highlight New Message . Then click (press and release) the trackwheel.
2. Type an email address or choose a contact from the list of contacts.
3. Press the SPACE key **twice** for the @ symbol. Press SPACE once again for dot (.) and SPACE again for **com**. You can continue to press Space to cycle through **.com**, **.net**, **.gov**, and **.org** suffixes.
4. Include your own email address on the CC line.
5. Add a subject. Then, type email text as desired.
6. Click the trackwheel. When a menu appears, click Send.
7. After a few minutes, click Inbox . The email message you copied to yourself should appear. (For more information see the *GoodLink User's Guide*.)



Good Technology, Inc.
www.good.com
Support: 1-408-400-4992